



November 2010

# Free Wheeling



Toolangi Trip 2nd October 2010

# Notice Board



## VFWDC GENERAL MEETING VENUE

The club meets at the Bowling Club Rooms, Noble Park Football Club, 46-56 Moodemere St., Noble Park on the 1<sup>st</sup> Wednesday of every month at 8.00pm (No meeting January). Members and Guests are welcome to dine at the Bistro before attending the meeting.

First **WEDNESDAY** of each month 8.00PM  
Start

**Venue:**  
Bowling Club Rooms (Next to Car Park)

Noble Park Football Club  
46-56 Moodemere Street  
Noble Park



Melways  
ref: 89  
D4

## Important Notice!



### November General Meeting

Please be aware that the November General meeting will be held at **Everything 4wd**. This is the 4wd business owned by our member John Partridge.

**The meeting will be a little earlier at 7:30pm.**

John will be putting on a BBQ and there will be specials on the night specifically for our club members.

Details:

**Everything 4wd**  
**88 Camms Road**  
**Cranbourne**  
**Phone: 59955055**

John now has full fitting and service capabilities and will be providing the raffle prize for the night. If there is enough interest, we may get a car up on a hoist for a look see.

## FREE WHEELING

Hello and welcome to the November newsletter. Melbourne Cup weekend see's the opening of some of the seasonal closure tracks. The good weather brings plenty of opportunities for trips. Please note: All reports and material for newspaper needs to be sent through before the 20th of each month. As this would be greatly appreciated, to ensure newsletter is sent out on time.

Cheers,

Catherine  
Editor@fwdc.com

**PRESIDENT'S REPORT**

Gee, this is hard to think of things to day each month! Lets start with the good gear, our club is in a good way currently with some new faces around on the Committee, newer and older members looking to run trips, so the warm season into the new year is really looking good! Also need to thank Mark Kochan for taking the big chair for the last meeting while I was away exploring the lovely colours of the Flinders Ranges (isn't it supposed to be RED DUST EVERYWHERE!! IT WAS GREEN/YELLOW/RED/BLUE/ etc!). It wasn't the smoothest trip with the mobile phone getting smashed on day 2, both batteries in the car dying on day 3, with the fridge also seizing the compressor on the following day. Yes, it was the trip you dream of. Add to that my 2 lovely little jewels of my eye that didn't listen to a word I said, nor help pack/unpack at camp, I was ready to chuck it all in there and then. Luckily I was in a group, where I was able to stuff my food into a spare section of Dan Robinsons fridge. Without this, I'd have been heading home early. Shows the advantages of travelling in a group, it may never happen again but these things do test us. That wasn't the end of my issues for the journey but we will leave it there before I cry.

Strange things can happen out there, as we came out of Marree heading to Lake Eyre (which was bone dry), I thought I recognised the voice on the UHF and at the same moment Dan called over the radio 'isn't that Paul Ryan on the radio - Paul is that you?' - and sure enough it was Paul and his group heading out of the Lake area as we went in! Strange where you can meet people you know! They had issues of their own on their journey with Little Shanes Lux so they were cruising into town to find a welder!

In recent months we have had some great presentations and talks given by various people at our monthly meetings which have been very good and accepted by the members. In the new year we will work on some new ideas for these presentations, maybe not as many or not as often so it doesn't lose its appeal. If you have any suggestions, please let us know. It is your club, you can always make suggestions.

Seasonal Closures: - well for those planning trips for the coming season, it will pay to check with the Parks and 4wd Vic websites, as there are many tracks staying closed for undetermined timeframe at this point. Some of these are main tracks in the High Country - some around Craig's Hut region that will cause heartache for many new players.

As the year winds down we have the Xmas Party coming up. Judging on last year's success its a great day for the kids, so let's hope to better it this year! All the info is in the newsletter elsewhere, and those with Email will have received a reminder by email. Finally, those heading away over the Xmas/New Year period, please take care out there. Leave early and don't rush to get to that secret spot you heard about. Getting there is what is important. Hope to see you at the December meeting which is December 1st and the Club Xmas Party on the 4th December. Take care.

Bruce Cremonesi  
President

**COMMITTEE OF MANAGEMENT  
2010-2011**

|                  |                 |                                     |
|------------------|-----------------|-------------------------------------|
| President        | Bruce Cremonesi | president@vfwdc.com<br>0400 425 296 |
| Vice President   | Mark Kochan     | vicepres@vfwdc.com<br>0412 544 668  |
| Treasurer        | Phil Griffith   | treasurer@vfwdc.com<br>0419 865 472 |
| Acting Secretary | David Bruinsma  | secretary@vfwdc.com<br>0417 747 860 |

**GENERAL COMMITTEE**

|                      |                  |                  |
|----------------------|------------------|------------------|
| Assistant Secretary  |                  | assist@vfwdc.com |
| Trip Co-ordinator    | Daniel Robinson  | trips@vfwdc.com  |
| Newsletter Editor    | Catherine Felton | editor@vfwdc.com |
|                      |                  |                  |
| Association Delegate | Ashley Martin    |                  |
| Training Officers    | Ashley Martin    | John Partridge   |
|                      | Michael Rodger   | Mark Kochan      |
| General Comittee     | Luke Teunissen   |                  |
| Web Manager          | Paul Ryan        | web@vfwdc.com    |

**Club Details**

|                 |  |
|-----------------|--|
| Registered Name | Victorian Four Wheel Drive Club Inc  |
| Registration No | A002184F   |
| Correspondence  | PO Box 778<br>Dandenong Vic 3174   |
| Email           | <a href="mailto:secretary@vfwdc.com">secretary@vfwdc.com</a>   |
| Website         | <a href="http://www.vfwdc.com">www.vfwdc.com</a>   |
| Meetings        | Held 8pm, first Wednesday of each month, excluding January (no meeting).   |
| Location        | Noble Park Football Club (Bowling club near car park)<br>46-56 Moodemere Street<br>Noble Park Melways ref: 89 D4                               |
| Newsletter      | All articles and photographs to be submitted prior to 20 <sup>th</sup> of each month to <a href="mailto:editor@vfwdc.com">editor@vfwdc.com</a> |
|                 | The Victorian Four Wheel Drive Club is an affiliated club of the Victoria Association of Four Wheel Drive Clubs Inc (VAFWDC)                   |

# Minutes of General Meeting October 2010

## General Meeting October 2010

The meeting was held at the Bowling Club Rooms, Noble Park Football Club and was opened at 8.00pm by Vice President Mark.

**Present:** There were 16 members present as per the attendance book

**Apologies:** Ashley, Bruce, Derek and Janet, Karen, Maxine

**Visitors:** Ben Kosakswkz, Andre VanDer Walt, Steve Abdallah, Brad Owens, Bob Wells, Ben Earl

## Minutes of previous General Meeting

(issued too late, no-one had a chance to read it)

**Accepted :**

**Seconded :**

**Matters arising: .....**

### Correspondence in

State Library of Victoria - Not received clubs Aug issue  
Royal Flying Doctor Service - Xmas order of merchandise  
Bendigo Bank - Cheque account statements (x2)  
Cross Country Jeep Club - Sept 2010 mag.  
Toyota Land Cruiser Club ... Vic. - sept 2010 issue  
ARB mag ... 4x4 action (spring 2010)

### Correspondence out

Nil

### Treasurers report

|              |    |         |
|--------------|----|---------|
| Term Deposit | \$ | 5202.49 |
| Cash         | \$ | 4085.75 |
| Petty Cash   | \$ | 50.00   |
| Money In     | \$ | 70.00   |
| Moneys Out   | \$ | 0       |
| Balance      | \$ |         |

**Accepted:**  
**2<sup>nd</sup>:**

### Trip reports

Brian - Lake Eyre trip (Shane only one that got bogged)  
3 or 4 on first night, Steve came up later  
Stayed at Mount Gibbs for a couple of nights  
Went though a lot of mud  
Had a 2k deviation around a large pond

Bruce's trip to Lake Eyre, by Dan  
4 cars on trip, Bruce left early due to car problems

Luke's first trip as a trip leader, to Toolangi  
3 cars on trip.  
Louise learnt all about mud puddles - have all windows UP.

John Partridge said he went up Gembrook way, for a night run - and advises that the tracks are pretty well cut up, don't go up there unprepared.

### Trip coordinators report

The various trip leaders gave a brief overview of the following upcoming trips.

| Type                | When                                       | Where                      | Trip Leader   |
|---------------------|--|----------------------------|---------------|
| Wine trip           | 15 <sup>th</sup> -17 <sup>th</sup> Oct     | Whitfield                  | Paul          |
| progressive         | 29 <sup>th</sup> -31 <sup>st</sup> Oct     | Whalhala and beyond        | Paul/Ashley   |
| Base camp           | 29 <sup>th</sup> -31 <sup>st</sup> Oct     | Macalister/licola          | Dan and Bruce |
| Mystry Pub<br>2 Pub | 12 <sup>th</sup> - 14 <sup>th</sup><br>Nov |                            | Dave Hughes   |
| Fishing Trip        | 19 <sup>th</sup> - 21 <sup>st</sup><br>Nov | King river, pineapple flat | Ashley        |

**Event Coordinators Report**  
nil

### Association Report

Abbetts Track closed - Meetings taking place, looking at if that track can be re-opened  
It is a rock track that is wide, and many paths that can be taken to go up



### General business

David Bruinsma introduced as Acting Secretary for the club.

Web site will be updated with old newsletters, probably dating back to 2003

Xmas Party at Myuna farm, 4<sup>th</sup> December

Govt Grant has been approved, and just waiting for govt to release to money to 4wdv

Mobile Mechanic - Hydraulics etc, Wizard - Al Bennet, 0424 505 514

*Magazine issues.*

Cut off will be 20<sup>th</sup> of each month for all items to be sent in to magazine editor.

Magazine will then be issued on the 25<sup>th</sup> of each month.

Trip leaders, please assign a person to do a day report, prior to leaving on trip - and to follow through to get the report in a timely manner.

Tim sent through 2 different trip reports, about a month ago - and does not appear to be in the magazine.

### Other Business

Larden park rally - we have an opportunity to be represented and have a stand (at no cost to club) have a couple of cars, banner etc

Friday 12 and Saturday 13<sup>th</sup> November.

Luke will arrange for pass's for volunteers to man a stand. Camping opportunities is available. Luke is involved in the Rally Event, thus cant man the stand.

### Raffle

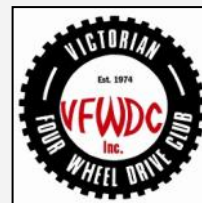
This month there is

Tickets sold by Mark

- 1<sup>st</sup> Prize - Bottle of Red wine Won by John
- 2<sup>nd</sup> Prize - dble power outlet Won by Ben Vosakswkz
- 3<sup>rd</sup> Prize - mystery prize Won by Steve Abdallah
- 4<sup>th</sup> Prize - mystery prize Won by Tim

**Meeting Closed: 9:40 pm**

**Next Meeting:** Wednesday 7.30pm 3<sup>rd</sup>/10<sup>th</sup> ??? November 2010 at All Things 4wd at Camms Rd, Cranbourne.



## CLUB MERCHANDISE For Sale

### (Revised Price List)

|                                   |            |
|-----------------------------------|------------|
| Club Polo Shirts                  | \$28.00 ea |
| Club Polar Fleece ½ Zip Jumper    | \$38.00 ea |
| Club Polar Fleece Full Zip Jacket | \$48.00 ea |
| Club Sleeveless Reversible Vest   | \$44.00 ea |
| Club Caps                         | \$15.00 ea |
| Club Bucket Hat                   | \$16.00 ea |
| Club Wide Brim Hat                | \$18.00 ea |
| Club Beanie                       | \$12.00 ea |
| VFWDC Sticker (long)              | \$ 6.00 ea |

We encourage all members to purchase a Club Polo Shirt.

Email your order to [committee@vfwdc.com](mailto:committee@vfwdc.com).  
Please ensure you advise size required.

9.10.10

## Vice Presidents Message

Dear Members,

Over the years, the continued issue with the newsletters release time and content, has been, ... well, continuous. This has stemmed from the continual flexibility and compromise, of both 'contributors' to the newsletter and the editors - past and present. It is no-ones fault specifically, but probably everyone's fault.

After listening to the complaints and issues over the years, in relation to the newsletter release time, the committee will be amending the dates of the newsletter for publishing / printing.

There has been in the past, deadlines / dates that contributions and general-business has been required. Many years ago, it was agreed by all, that the deadline for contributions was the 15<sup>th</sup> of the month. This deadline has been changed over the last few years to the 20<sup>th</sup> (as most people now receive the newsletter through e-mail / website). The dates for contributions have not been the issue. It is the willingness of the club, generally speaking, to respect the committee and the editor, to have contributions sent on time, and thereby allowing the editor to publish / print the newsletter on time.

It has been a continual compromise by all. This is no longer acceptable, and it is definitely not beneficial to the integrity of the club, or our newsletter. Therefore, there needs to be procedural deadlines and a commitment from all, to the way the newsletter is managed.

As I pointed out at the last general meeting, there needs to be a genuine commitment from all members. There can be no more flexibility on behalf of the editor (with regard to waiting for contributions), and no more compromising by members toward the date / deadline for newsletter contributions (that is, if you want your contributions to be in the forth-coming newsletter).

Like all papers and magazines, there is a printing deadline that must be met. From now on, for our newsletter, it will be the 25<sup>th</sup> of each month - plus or minus one day, allowing for weekends, sickness, etc...

I do not believe, that this will be too hard to manage, and I ask all members to honor these dates. Thank you.

\*\*\*\*\*

I would also like to take this opportunity, to update and inform you all, that due to family issues and a heavy workload, Shane Michelon has asked to step down as our editor. The committee would like to thank Shane for his work on the newsletter. Thank you Shane.

To fill the editors position, on behalf of the committee, I would like to welcome, and thank Catherine (and Mark) Felton, for volunteering to be the new editor for our newsletter. As mentioned earlier, I hope we all respect Catherine's role as editor, and make sure that any contribution / article for the newsletter, will be on time.

Thank you,

Mark Kochan,  
Vice President



*The 2010 VFWDC  
Christmas Party will be held on  
Saturday, 4 December at*

# Myuna Farm

*182 Kiggs Road, Doveton  
(Melway Map Ref 90 H7)*



*Animal Display Centre  
Wetlands Nature Walk  
Aviaries  
Pioneer Theatre*

|         |          |          |
|---------|----------|----------|
| Prices: | Families | \$18.00  |
|         | Single   | \$ 6.00  |
|         | Rides:   |          |
|         | Pony     | \$2.00pp |
|         | Train    | \$1.50pp |

Gates Open 10am  
BYO Meat and Beverages  
The Club will provide salads and soft drinks for the kids.

Bring along the family and enjoy the festivities.



## CLUB CALENDAR AT A GLANCE

| 2010         |   |  |               |                                    |
|--------------|---|--|---------------|------------------------------------|
|              | 30th Oct –2nd Nov                                   | Melbourne Cup Weekend—Licola Surrounds | Dan Robinson  | 0407 334 169                       |
| November     | Wednesday 3rd                                       | General Meeting                        | Bruce         | 0400 425 296                       |
|              | 12th–14th   | Mystery Pub to Pub to Pub              | David Hughes  | HM: 9706-2966<br>Mob: 0427 865 592 |
|              | 19th–21st   | Fishing Trip                           | Ashley Martin | 0438 600 904                       |
| December     | Wednesday 1st                                       | General Meeting                        | Bruce         | 0400 425 296                       |
|              | 4th   | Christmas Party—Myuna Farm             | Bruce         | 0400 425 296                       |
| January 2011 | Wednesday 1st                                       | General Meeting                        | Bruce         | 0400 425 296                       |
|              | 8 April - 27 April 2011<br>(Easter School holidays) | EOI Simpson Desert                     | Dan Robinson  | 0407 334 169                       |



**VFWDC**

### ADVERTISING DIRECTORY



#### ALL CEREMONIES

Flair-Excellence-Sensitivity  
Sue A Lyne  
Civil Celebrant  
Ph: 9787 5665

#### BUSH-B-Q

Manufacturer of the Barbeque of the Outback  
Don & Thelma Montague  
Ph: 9808 1200 Mob: 0414 355488  
Email: [info@theldon.com.au](mailto:info@theldon.com.au)  
Web: [www.theldon.com.au](http://www.theldon.com.au)

#### CAMSEW-SEWRENT

Domestic & Industrial Sewing Machine Repairs  
Ron Camm  
Mob: 0419 884920 Fax: 9766 4598  
Email: [sewrent@camsew.com.au](mailto:sewrent@camsew.com.au)

Anyone wishing to advertise in the Club Directory,  
contact the Editor at [editor@vfwdc.com](mailto:editor@vfwdc.com)

#### FRANKLAND ELECTRICS PTY L TD

Electric Motor Sales, Service, Repairs & Modifications  
Power Tool Service & Repairs  
Peter & Janine Frankland  
Ph: 9555 6624 Fax: 9555 6565  
Email: [fralecpete@aol.com](mailto:fralecpete@aol.com)

#### METALAIR INDUSTRIES

4x4 Camper Trailers, Accessories &  
Camping Equipment  
David Hughes  
Ph: 9798 1492 Fax: 9798 2593  
Email: [metalair@tenex.com.au](mailto:metalair@tenex.com.au)

#### R & D BROWN PAINTING SERVICES

Quality Workmanship at the Right Price  
Ray & Dawn Brown  
Ph: 5967 1437 Fax: 5967 1439 Mob: 0411 799054

#### TAYKA TRIP TRAILER HIRE

Off Road Camper Trailer Hire  
Bill Harwood  
Ph: 9707 2144 Mob: 0414 477 503

#### TECOMA ELECTRICAL SERVICES

Industrial, Commercial & Domestic  
24hr Emergency Service  
Ian Warburton  
Ph: 9754 2341 Mob: 0409 797675



## UPCOMING TRIPS

|   |   |
|---|---|
| DESTINATION   | Melbourne Cup Weekend—Licola Surrounds            |
| LEADER  | Dan Robinson 0407 334 169                         |
| DATE  | Sat 30 <sup>th</sup> Oct—Tues 2 <sup>nd</sup> Nov |
| MEETING   | Longwarry BP at 8:30am                            |
| GRADE   | Easy - Medium                                     |
| <p style="text-align: center;">TRIP ACTIVITY DETAILS</p> <p>We will be heading for Cheynes Bridge Camping area, then touring some of the better known tracks in the area (Butcher country, Caladonia River, Dingo Hill &amp; others). I currently have 4 more positions for this trip. Trailers are OK as we will be base camping.</p> <p>I will need to change the itinerary a little as most of these tracks are closed into December. But will be looking around the area in the Avon wilderness.</p> <p>Anyone interested please email or call me.<br/> <a href="mailto:trips@vfwdc.com">trips@vfwdc.com</a> 0407 334 169</p> |   |
| VEHICLE LIMITS  | MINIMUM: 2 MAXIMUM: 5                             |
| EQUIPMENT   | Basic recovery equipment                          |
| RADIO UHF   | 12  |

### [Expression of Interest - Birdsville Track Easter holidays 2011](#)

I am thinking about doing a 17 day trip over the Easter School Holidays in 2011, leaving April 9<sup>th</sup> returning back by on or Anzac day. My intention is to do this with a Camper Trailer. I would like to know if there are any people interested in doing the Birdsville trip - *and I would also like to hear from people who have done the trip* in recent times to find out about track conditions and suitability of doing the trip *with camper trailers*. Also would like thoughts as for good places to stop/see along the way.

My plans were to get to the start of the Birdsville track over 2 days, and then doing about 250/300 km's per day (or less), depending on track conditions and amount of sightseeing stops we make reroute. Once we get to Birdsville, drop the trailers somewhere and have a go at Big Red. Then head along the Birdsville Developmental track into Roma district before turning south and coming home via the blacktop over a couple of days.

Please contact me via email [admin@bruinsma-design.com.au](mailto:admin@bruinsma-design.com.au), or by phone 0417 747 860, or at home on 9702 0288.

Regards,  
David Bruinsma

|                       |   |
|-----------------------|---|
| DESTINATION           | <b>Mystery Pub to Pub to Pub</b>  |
| LEADER/CONTACT NO.    | David Hughes WK: 9798 1492<br>HM: 9706 2966<br>MOB: 0427 865 592  |
| DATE                  | 12 <sup>TH</sup> , 13 <sup>TH</sup> , 14 <sup>TH</sup> NOVEMBER 2010  |
| MEETING               | To be advised   |
| GRADE                 | C or B  |
| TRIP ACTIVITY DETAILS | Traveling anywhere to an unknown destination.<br>Just a fun weekend with a few surprises along the way.<br>Morning Tea and Afternoon tea provided |
| VEHICLE LIMITS        | 4—12  |
| APPROX KMS            | Unknown at this stage   |
| EQUIPMENT             | Sense of Humour, Basic recovery gear and a Stubby Holder  |
| RADIO                 | Ch 12   |



|   |  |
|---|--|
| DESTINATION   | <b>Fishing Trip</b>                            |
| LEADER  | Ashley Martin 0438 600 904                     |
| DATE  | Fri 19 <sup>th</sup> —Sun 21 <sup>st</sup> Nov |
| MEETING   | TBA  |
| <p style="text-align: center;"><b>TRIP ACTIVITY DETAILS</b></p> <p>As I only have the main weekend free I thought it would be suitable to take in some of the great tracks around the Walhalla/Aberfeldy area. The plan would be to meet up Friday night and maybe drive a few tracks before stopping at camp. Saturday will be all driving with a great array of tracks available. There maybe be 1 or 2 harder tracks but these can be avoided for those not willing. There will be no base camp and not suitable for trailers.</p> <p>Sunday will be more driving but I will be heading home Sunday afternoon. This would be a great opportunity for those with the extra few days to find a lovely camping spot, sit relax or maybe meet up with another Club trip.</p> |  |

|                           |  |
|---------------------------|--|
| DESTINATION               | <b>EOI Simpson Desert Forthcoming Trip</b>   |
| LEADER                    | Dan Robinson 0407 334 169  |
| DATE                      | 8 April - 27 April 2011 (Easter School holidays)   |
| MEETING                   | TBA  |
| TRIP CLASSIFICATIONS      | WET: Medium<br>DRY: Medium   |
| TRIP ACTIVITY DETAILS     | I will be traversing the Simpson desert trying to follow the trip on Exploreoz website to try to get in as much as possible. |
| VEHICLE LIMITS            | MAXIMUM: 6   |
| APPROX KMS                | Approx k's without fuel is 600k's of desert driving.   |
| LAST AVAILABLE FUEL       | PETROL & DIESEL: Mt Dare   |
| DISTANCE BETWEEN SUPPLIES | Approx 600k's  |
| EQUIPMENT REQUIRED        | Basic Recovery Equipment   |
| MAPS REQUIRED             | Hema Deserts   |
| RADIO CHANNEL             | 12/10  |
| CB/ UHF                   |  |



86 Camms Road, Cranbourne, 3977  
P: 03 59955055  
F: 03 59955199  
E: sales@everything4wd.com.au  
W: www.everything4wd.com.au

## New retail store is now open with full workshop facilities

### - Fitting – Servicing – Repairs -

#### Now selling from the following brands:

|                       |                        |
|-----------------------|------------------------|
| Auspit                | Milford Cargo Barriers |
| Boab                  | Outback Accessories    |
| Bush BQ               | Piranha                |
| Camel Camper Trailers | Rhino Roof Racks       |
| Ctek Battery Chargers | Safari snorkels        |
| Don Kyatt Spare Parts | Silverstone Tyres      |
| Dynamic Rims          | Sinergex Invertors     |
| Hayman Reese Towbars  | Terrain Tamer          |
| Ironman               | Tigerz11 winches       |
| King Springs          | Xrox Bars              |
| Koni Shocks           | xXx Driving lights     |

#### Our products include:

|                      |                              |
|----------------------|------------------------------|
| Air Jacks            | Inverters                    |
| Awnings              | Long Range Tanks             |
| Batteries            | Power Monitors               |
| Battery Chargers     | Power Outlets                |
| Bullbars             | Rear Protection Step Towbars |
| Camper Trailer Hire  | Rear Wheel Carriers          |
| Camper Trailer Sales | Recovery Gear                |
| Compressors          | Roof Racks                   |
| Diff Breather Kits   | Rooftop Tents                |
| Driving lights       | Snorkels                     |
| Dual Battery Systems | Spare Parts                  |
| Dual Battery Trays   | Storage Systems              |
| Fridges              | Suspension Kits              |
| HID Conversion kits  | Synthetic Winch Rope         |
| HID Driving Lights   | Ute Canopies                 |
| High Lift Jacks      | Ute Liners                   |

#### Discounts available for all 4WD club members





## Toolangi trip

Saturday 2nd October

### “SHUT UP FOOTY”S ON THE RADIO”

On what will become a day in history that most people will remember as the day the Grand Final was replayed we headed out into the bush.

This was my first attempt at being a trip leader and it's not as hard as you might think. I spent a couple of nights planning my proposed trip to Toolangi. I then sought some advice and was even given a set of trip notes (thanks to Derek) from some more experienced TLs in the club. Tim volunteered to be my Tail End Charlie for the trip. We organised to do recce on the first grand final day, it was perfect weather for a day in the bush. No one else was there; the serenity of not hearing motorbikes screaming around was magic. Unfortunately due the devastation of the 2009 fires, the area is still untidy and will be for a while. The recce proved to be worthwhile as a lot of the mapped 4WD tracks are now really 2WD roads. This unfortunately made for a boring 4wd adventure in the Toolangi area. So at the end of recce Tim and I decided we should try and spice it up a little for the trip on the following weekend.



9:00am: Saturday 2<sup>nd</sup> of October we met in Yarra Glen at McKenzie Reserve. Introductions and a short briefing of the days plan, was had. Participants for the day were: Tim Axtell & Travis; Louis, Blake, Liam, my Dad and myself. We set off down to Pauls range track, a nice easy track to get the mind focussed. Then we headed into the Toolangi Forrest, from here we headed up Spraggs road and to our first challenge. A little bit of mud.

It might have only been a little bit of mud but I still managed to get stuck. Just a little more gas and I would have got thru unscathed. Out with the snatch strap, and a short pull from Louis and we were back to have another crack. I was giving advice to help Louis thru this obstacle, when my father decided to have a go at passing the rut. Remind me not to let him drive my car again. However Tim was impressed with his 'drive it like you stole it' attitude. Not happy... Then it was Louis' turn. Valuable tip for mud puddles was learned by Louis. When going thru puddles make sure your windows are up. Poor Pedro the Pajero started the day with a pristine white duco.



After this excursion he was brown inside and out, from the front guards to inside the rear window. Not mention the side of her top. Tim was last through and showed us how big tyres and lift can help. Next was up along Marginal rd to an unnamed track that joins Klondyke rd. This little track is quite rocky and a bit of a different challenge, with a couple of our low cars picking your line was of utmost importance. The track climbs 360m in 750m. Louis was a little overwhelmed with the sight of the hill, but Tim was salivating at the memory of the previous week, when we did this track during recce.

Up we went. Louis got half way up and picked the wrong line and stopped due to lack of momentum and some well worn radial tires. Tim came to the rescue this time, where he pulled Louis to a flatter section of the track for her to start her ascent again. She got to the top with a little in cab guidance. Once all at the top we started to head for the lunch spot, Murrindindi Cascades. A nice little spot we found on recce. However trying to get from one side of the forest to other with a co-pilot, who can't read a map is a little bit frustrating. The 7 year old did a better job the previous week. After doing a few U turns and back tracking we had lunch at the start of Woodmere track.

#### Trip Reports Cont:

Now this track is definitely for the boys with BIG tyres. However Tim was excited at the chance to play in the mud. With a lot of persuasion and careful inspection we decided to have a crack. With Tim having the most modified truck of the trip I decide that it would be better if he lead the way for this section. One of my better decisions of the trip as only a few hundred meters up the track he got stuck in a huge puddle and had to winch himself out.

So with plenty of mud on the cars and in some cases inside the cars we decided to turn around and head for home as there was a good amount of time required at the car washes. As the weather was warm and as a reward to the well behaved children, we stopped in at Yarra Glen for an ice cream.

So safely we all returned with some valuable lessons learned and more importantly having spent the day doing something better than watching Collingwood win the final.

So hopefully we will see you out on the tracks soon.

Luke & Co.

## MEDIA RELEASE

Thursday 21 October 2010

Storm and flood damage keeps some forest tracks closed Some roads and tracks in Victoria's forests and parks that were temporarily closed for winter will remain closed for repairs to damage caused by the recent storms and flooding.

The Department of Sustainability and Environment (DSE) and Parks Victoria run a program of seasonal road closures to provide safe conditions and protect our forest roads from damage during the wetter months.

Acting DSE Manager Statewide Roading & Bridges Program, Wayne Beaton said: "We are progressing well with assessing the extent of the damage across Victoria and we are working to repair roads and stream crossings that have sustained minor damage but it's clear that some won't re-open on October 28 as we had originally planned".

There is evidence of significant land slips and bridge failures on some popular tourist routes that will require detailed engineering assessment and design before they can be repaired. These roads will be closed until the risks to the public can be addressed. For up to date information on the roads and tracks still needing repairs go to: [www.parkweb.vic.gov.au](http://www.parkweb.vic.gov.au) . Parks Victoria spokesperson Ross Williamson said: "Under the seasonal road closure program bush roads and tracks were temporarily closed from June 17th and would normally re-open on October 28th".

Some significant roads and tracks in our forests and parks that were temporarily closed on June 17 won't re-open as usual because of the damage to the road surface or important crossings in September's severe wet weather, Mr Williamson said.

This is particularly the case in the Alpine National Park north of the Great Divide, the Howqua Hills Historic Area, and the parks along the Murray upstream from Barmah.

Some of the significant roads and tracks that won't re-open on October 28th include; King Basin Road (Alpine National Park), Howqua Hills Track (Alpine National Park), Mt Pinnabar Track (Alpine National Park), Circuit Road, from Howqua Gap to King Saddle (North East), Clear Hills from Circuit Road to Craig's Hut (North East), Upper Dargo Road (East Gippsland), Main Mt Cole Road (South West), Waterace Road (South West), Macalister River Track (Alpine National Park), Bluff Link Road (Alpine National Park), Mile Jeep Track (Alpine National Park), Little Cobbler Track (Alpine National Park), Speculation Road (Alpine National Park), Burnt Hut Creek Track (Grampians National Park),

Lynches Crossing Track (Grampians National Park), Briggs Track (Grampians National Park) Moora Track (Grampians National Park) and Mair Track (Grampians National Park). Any roads that were temporarily closed but haven't been damaged will re-open as normal on October 28. "While the wet weather has shut some tracks it has also given the

environment a new lease of life. Spring is a great time to get out and see the impact of the recent rains and there are hundreds of great tracks and trails through our parks and forests that are open and accessible. We ask anyone who is affected by an extension to the temporary closure of a road or track to be patient and continue to obey the closure until repairs are completed. The best advice is to check local conditions on the website."

For more information about road closures contact the DSE Customer Service Centre on 136 186 or Parks Victoria on 13 1963 or go to [www.parkweb.vic.gov.au](http://www.parkweb.vic.gov.au) Media contacts DSE (Nick Talbot) 0408 473 278 or Parks Victoria (Steve Gartland) 0458 376 834





**FWDV Delegates Brief Sheet to be read out at Club Meetings, or printed in Club Magazines.**

### **October 2010**

**FWDV AGM** - FWDV was to hold its AGM on Thursday 16<sup>th</sup> September along with the election of Office Bearers to the Board, however as the Audit was not completed in time, the Board decided to postpone the AGM. We are hoping to hold the AGM on the same day as President's Day – Sat 13<sup>th</sup> November, clubs will be kept informed on this new date.

#### **Call for Board Nominations**

FWDV are seeking capable members of Clubs to be nominated for positions on the Board. While many of the existing Board will be staying on there are a few positions that will need new people. Your Club is encouraged to have a member on the Board. Details of duties are available from any Board member or the Office.

**FWDV Raffle** – Thank you to all those Clubs who assisted with the sale of raffle tickets in our 2<sup>nd</sup> raffle for the year, prizes were drawn on Sunday 3<sup>rd</sup> October at Leisurefest, and winners have been notified. Prize winners were as follows:

- 1<sup>st</sup> Prize - 37 litre Waeco Fridge (incl Cover) valued at \$1139 – won by Karen Wade of Avondale Heights,
- 2<sup>nd</sup> Prize - Freshfield Vacuum Sealer Pack valued at \$1000 – won by John Ciccari of Grantville,
- 3<sup>rd</sup> Prize - Winery Tour with Hummers for Hire valued at \$500 – won by Brendon Espagne of Kialla, and
- 4<sup>th</sup> Prize - Accommodation and Meals Package at the Black Spur Inn, Narbethong valued at \$200 – was won by Liz Bailey of Langwarrin.

#### **eNews**

eNews is the online newsletter produced by Four Wheel Drive Victoria to keep four wheel drivers up-to-date with issues such as track closures, upcoming events and opportunities to give back to the community if you are not currently receiving eNews contact Suzie at the Office on (03) 9857 5209 or email [office@fwdvictoria.org.au](mailto:office@fwdvictoria.org.au) listing you name, club and email address.

#### **National 4X4 Show & Leisurefest**

The National 4X4 Show and Leisurefest have been run for another year. FWDV had a stand at both these shows speaking to members of the public about joining clubs, tracks, and training, and we handed out some 2500 show bags. Thank you to all those who helped out on the stands at these two shows.

#### **Camp Host – Melbourne Cup Long Weekend**

We have just been advised by Parks Victoria that the campsite at Wingan Inlet at Mallacoota is available as a Camp Host Site. We also have some other sites that are yet to be allocated so if your club would like to take up a Camp Host location and staff it over this weekend, please contact Wayne Hevey at the Office on 9857 5209 or email Wayne on [events@fwdvictoria.org.au](mailto:events@fwdvictoria.org.au)

**Oxfam Christmas Tree Deliveries** - Over the last 18 years, FWDV have encouraged club members to organize a team of vehicles to support the annual Oxfam Christmas tree drive. Your club and its members will be supporting a well recognized community event and fundraiser for Oxfam's important work. As well as this, the goodwill and public recognition for FWDV Clubs in supporting this well organized operation, adds a positive image to our public profile. You can make it a fun day out, dress up or even decorate your vehicle to get in the spirit. For a couple of hours or even a couple of days of your time, you will help Oxfam but also promote the good work that your club and its members do, in conjunction with FWDV to assist the communities.

---

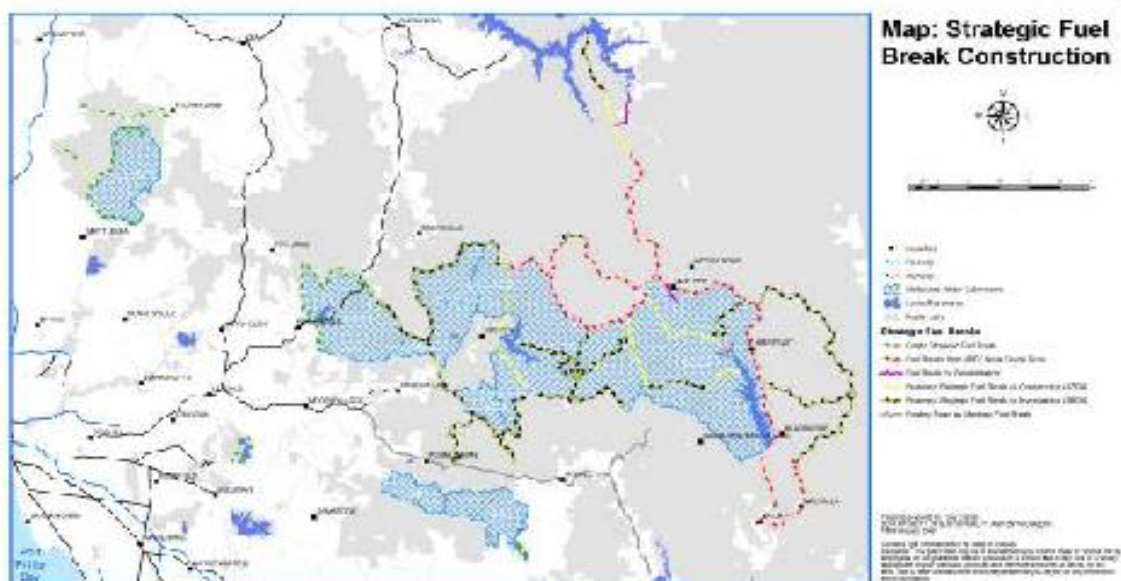
Four Wheel Drive Victoria  
 PO Box 1015G Balwyn North VIC 3104  
 Tel: (03) 9857 5209 Fax: (03) 9857 5260  
 Email: [ceo@fwdvictoria.org.au](mailto:ceo@fwdvictoria.org.au) Web: [www.fwdvictoria.org.au](http://www.fwdvictoria.org.au)  
 ABN 40 891 301 368 ASSN No: A0013539S RTO 21605



The Department of Sustainability and Environment (DSE), Parks Victoria and Melbourne Water are working together to protect Melbourne's world class water supply. Melbourne's water catchments provide drinking water for more than 4 million people. A network of around 600km of fuelbreaks is being constructed to help protect these invaluable forest catchments from the threat of wildfire.

## What's happening?

350kms of fuelbreaks were built to protect the Thomson and Upper Yarra Catchment during the Great Divide Fire 2006/7. These fuelbreaks are being maintained in readiness for the fire season. Additional fuelbreaks in and surrounding the catchments have undergone environmental and cultural assessments, approvals, design planning and consultation. These fuelbreaks will be constructed over the next two years.

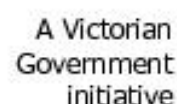


### Why is this being done?

The water catchments in our forest areas to the east and north of Melbourne produce 90% of Melbourne Water's water supply, 80% of which originates in wet forest types. It is essential to protect the catchments from wildfire, as the loss of forest from wildfire would affect water quality, and in the longer term reduce the amount of water in our reservoirs.

### What will the breaks look like?

The breaks will generally be 20 metres wide. In most areas, 30% canopy cover from over-storey trees will be retained to provide shade and connection of trees for wildlife. Vegetation coverage will be retained on the ground and annual maintenance slashing will be undertaken by Melbourne Water and DSE to maintain access.





# Strategic fuelbreaks

protecting Melbourne's precious water supply

## How will they be built?

The breaks are generally located on ridgelines and generally coincide with existing roads and tracks. Machinery is being used to clear most of the understorey and some of the larger trees from the width of the break. Large material will be assessed for commercial use and sold with the necessary licences and approvals. Material appropriate for firewood will be made available through the normal DSE firewood processes. Any remaining debris will be burnt or mulched.

## Where are the breaks?

The breaks stretch from the Thomson catchment in the east through the Upper Yarra, Armstrong, O'Shannassy and Maroondah catchments to Wallaby Creek near Kinglake north of Melbourne. Also included are the smaller McMahon's and Starvation catchments.

## How will the fuelbreaks work?

The breaks will not stop a forward moving wildfire in extreme conditions. They will provide a safe and effective area from which back-burning can be undertaken. Critical fire-fighting time is saved if the strategic fuel breaks are in place. The network will provide an effective break in forest fuel and a well-prepared area to assist in fuel reduction burning programs.



## How are environmental and cultural impacts managed?

All works on the fuelbreaks have been subject to full assessments for environmental and cultural impacts. The fuel breaks have met requirements under State and Federal Government legislation, particularly the *States Flora and Fauna Guarantee Act 1986*, *Aboriginal Heritage Act 2006* and the *Commonwealths Environment Protection and Biodiversity Conservation Act 1999*.

External specialists have made recommendations on fuelbreak design and work methods to limit disturbance to native flora and fauna and cultural heritage sites that are listed and therefore protected.

All work on the new fuelbreaks has been dependant on the completion of assessments and approvals. Works are regularly supervised to ensure management prescriptions are complied with.

Published by the Victorian Government Department of Sustainability and Environment Melbourne, April 2008

© The State of Victoria Department of Sustainability and Environment 2008

This publication is copyright. No part may be reproduced by any process except in accordance with the provisions of the Copyright Act 1968.

Authorised by the Victorian Government, 8 Nicholson Street, East Melbourne

Printed by DSE

Printed on 100% Recycled paper

ISBN 978-1-74208-332-2

For more information contact the DSE Customer Service Centre 136 186

Disclaimer:

This publication may be of assistance to you but the State of Victoria and its employees do not guarantee that the publication is without flaw of any kind or is wholly appropriate for your particular purposes and therefore disclaims all liability for any error, loss or other consequence which may arise from you relying on any information in this publication.



A Victorian  
Government  
initiative

